

Trauma-Informed Youth Work

Facilitated by:

Kamau Davis-Locke, Learning & Research Associate

Kathe Rogers, Knowledge Exchange Director, MSW, RSW



YOUTHREX
Research &
Evaluation eXchange



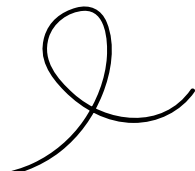
RECOGNIZING THE LAND & THE PEOPLE

Source: native-land.ca



RECOGNIZING THE LAND & THE PEOPLE

YouthREX's provincial office is located at York University. Both YouthREX and York University recognize that many Indigenous Nations have longstanding relationships with the territories upon which York University campuses are located that precede the establishment of York University. We acknowledge our presence on the traditional territory of many Indigenous Nations. The area known as Tkaronto has been care taken by the Anishinabek Nation, the Haudenosaunee Confederacy, and the Huron-Wendat. It is now home to many First Nation, Inuit, and Métis communities. We acknowledge the current treaty holders, the Mississaugas of the Credit First Nation. This territory is subject of the Dish with One Spoon Wampum Belt Covenant, an agreement to peaceably share and care for the Great Lakes region.



Agenda

- Learning Objectives
- About YouthREX
- Practices for Engaging & Empowering Youth
- Case Study: Youth Reconnect Program
- Six Good Youth Work Practices

ABOUT YOUTHREX

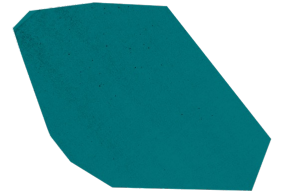
OUR VISION

An Ontario where shared knowledge is transformed into positive impact for all youth.

OUR MISSION

To make research evidence and evaluation accessible and relevant to Ontario's youth sector through knowledge exchange, capacity building, and evaluation leadership.

PROGRAM OBJECTIVES



Knowledge Exchange

We create and curate evidence-based resources to support youth work practice, and to amplify the voices and experiences of young people in Ontario.



Learn by YouthREX

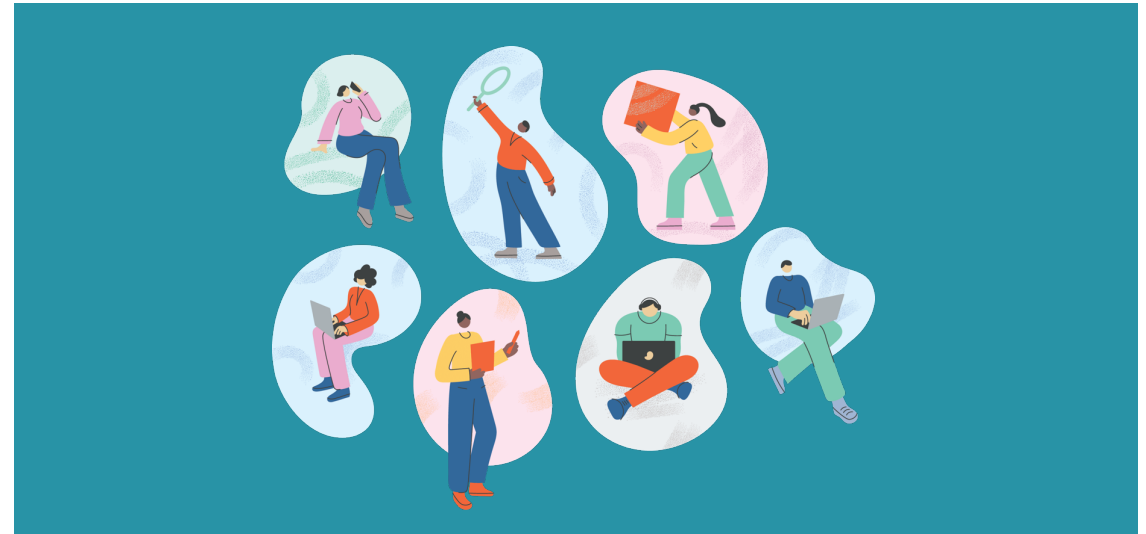
We offer professional development opportunities for youth workers to learn, connect, and share – both online and offline.

PROGRAM OBJECTIVES



Youth Program Supports

We work with youth programs to support the design, development, and evaluation of their work with young people.

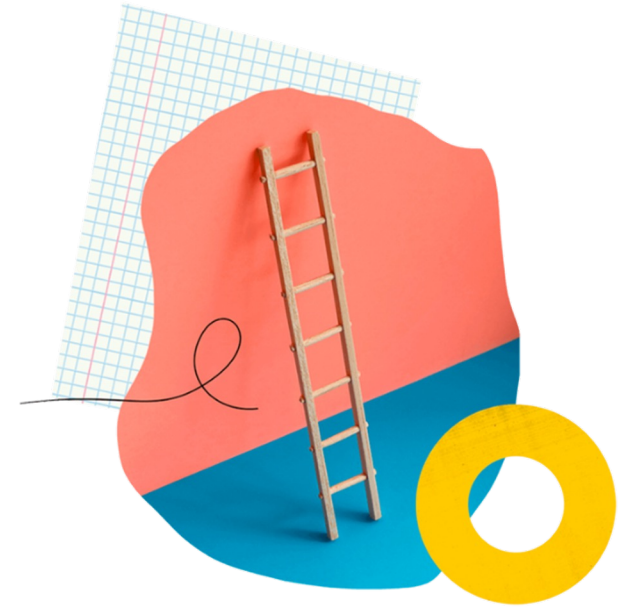


Community-Engaged Research

We conduct Community-Engaged Research about youth and youth workers in Ontario. Our first project – the Ontario Youth Sector Compass – was completed in November 2021.

Introduction

- What is your name?
- What challenges are you experiencing in your work?





Practices for Engaging & Empowering Youth



Acknowledge youth's strengths, skills, and lived experience.

- Respect the knowledge that youth bring.
- Take time to understand their strengths.
- Focus on the issues that matter to youth.



Meet youth “where they are” – and provide support and accommodations.

- Meet youth on their terms.
- Ensure that they are fully informed participants.
- Recognize the various demands of their lives.



Create a safe space where all young people have room to participate in multiple ways.

- Foster a non-judgemental environment.
- Consider the intersecting identities of youth.
- Account for their needs through necessary incentives.



Engage young people early on.

- Ensure meaningful involvement.
- Strengthen commitment.
- Establish a partnership of equals.



Establish shared objectives, values, and principles.

- Ensure a mutual understanding.
- Check assumptions.
- Ask “what is your role?”



Define adult roles and level of input.

- Balance guidance and mutual learning.
- Cultivate an open-minded environment.
- Establish ‘channel of engagement’.



Case Study: Youth Reconnect Program



Program Elements and Objectives

- Keep young people “in place”.
- Stabilize living situations.
- Support young people and their families.
- Enhance school engagement.



School-Based Supports

- Establish strong relationships with schools.
- Ensure that students know where to seek assistance.
- Enhance school engagement.



Community-Focused Service Delivery

- Meet youth where they are comfortable, ensuring accessibility.
- Create actionable goals.
- Facilitate access to necessary services.



Six Good Youth Work Practices



Centre youth voice and lived experience.

- Meaningful Youth Participation
- Trust Building
- Recognition of Contributions



Use strength-based approaches.

- Humanizing Engagement
- Social Contextualization of Challenges
- Recognition of Strengths



Cultivate a sense of belonging.

- Tailored Approach
- Barrier Reduction
- Support and Accommodations



Create opportunities for peer connection.

- Peer Support Spaces
- Skill Building and Leadership
- Community Building through Positive Engagement



Engage networks of support.

- Engaging Support Networks
- Critical Role of Involvement
- Adaptable Approaches



Connect the personal to the political.

- Continuous Learning and Reflection
- Acknowledging Privilege, Biases, and Assumptions
- Micro and Macro Level Considerations



QUESTIONS?



THANK YOU!

www.youthrex.com | @REXforyouth

An Ontario where shared knowledge is transformed
into positive impact for all youth!

Learn More:



Follow Us!

